

THE CASE FOR HEALTHIER HOMES: RECOMMENDATIONS

FOR THE PITTSBURGH REGION



1

PROTECT CHILDREN



INVESTIGATE ALL Instances of Elevated Blood Lead Levels in Children.



DEMAND Resources for Known "Hot-Spot" Neighborhoods.



SAFEGUARD Places Where Children Gather.

2



PROTECT PEOPLE WHO RENT

3



DECLARE HEALTHY HOMES A PUBLIC HEALTH POLICY PRIORITY



FIX the Homes and Apartments that Pose Health Risks from Lead, Radon and Mold.



LEVERAGE Synergies Between City and County Efforts.



INVOLVE the Medical Community to Assist in Best Practices and Data Tracking.



ESTABLISH All Rental Units – Including Voucher-Paid Housing Units – as Healthy Homes.

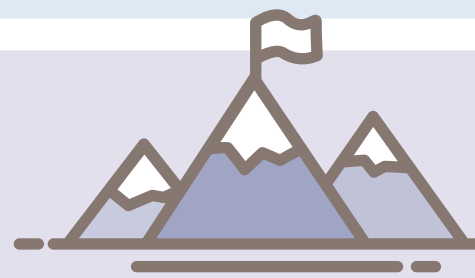


CONFIRM Lead-Safe Construction and Demolition Practices are Being Followed.



ENGAGE Landlords to take a Voluntary Healthy Home Pledge.

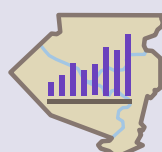
5



GUARANTEE GOALS THROUGH MONITORING AND REPORTING



EXPAND Support to At-Risk Homes through Cross-Functional Network.



CREATE County-Wide Rental Registry on Testing, Remediation, and Compliance.



PUBLISH an Annual Healthy Homes Scorecard.

4

ARM THE PUBLIC WITH ACCESS TO INFORMATION



POST Easy-to-Navigate Home Health Data on the County Health Department Website.



BOOST Disclosure of Information at Time of Sale or Lease.



COORDINATE Ongoing Education and Support Opportunities for Residents.

EDUCATION | ADVOCACY | TECHNICAL EXPERTISE

Get the full detail on these recommendations and download the paper here: www.getenergysmarter.org/advocacy

© 2017 CCI

